

REPLACES 6 OF THE OLD MAGNAFLUX TYPE 188895 PC BOARDS USED IN H-800 SOLID STATE SERIES MAG UNITS, AND ALSO OTHER MODELS

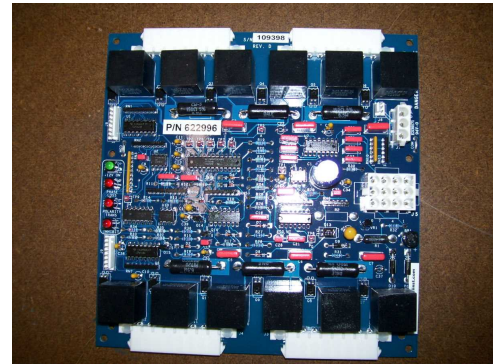
The **Scientific Instruments' 3 phase** Scr pc board is a replacement for electrical functionality, with minor wiring changes needed. It can replace 6 of the Magnaflux single phase 188895 pc boards in 1/3 of the space..it can also be used to upgrade older 3 phase power packs, or wet units, and you get infinite resolution current control control down to 20 amps, with a 1/10 second current rise time, for excellent repeatability in h-800 series and D-960 series models

12 scr pulse transformers, for revesing dc or mag only applications, controls up to 12 scrs

with max operating input voltage of 600 VAC

Features & Advantages

- ◆ Long Life conformal coated pc board
- ◆ 20us wide, 1.5 amp hard firing gate pulse outputs
- ◆ Input voltage can be anything between 230 vac to 600vac
- ◆ 50hz or 60hz operation, auto adjusting
- ◆ auto ranging 3 phase input voltage
- ◆ reliable fully digital pc board with 30 yrs of field proven operation
- ◆ designed for modernizing 3 phase fwdc power packs and wet units
- ◆ Not phase rotation sensitive, L1, L2, L3 rotation can be reversed



Three Phase SCR controller PC board

Specifications

AC input: 200 to 600 vac,50/60hz auto adjusting

**Phase sense input for auto phase loss detection
auto balance of all 3 phases**

Operating temp. : 0 to 40 deg. C

replaces 9 of the gould bass modules
quick disconnect thru Molex connectors on pc board

All digital design with custom gate array

Made in USA

2 YR warranty